

**Watercolour Mediums & Accessories**



Colour wheels		
840303 Watercolour wheel		<b>£13.75</b>
840302 Artists wheel		<b>£7.48</b>
840301 Pocket wheel		<b>£4.45</b>



Artist sponges		
840120 Small 1"		<b>£0.65</b>
840121 Standard 2"		<b>£1.40</b>
840122 Large 3"		<b>£2.40</b>
840123 Ex. Large 4"		<b>£5.00</b>

Old Holland gum arabic water		
739003 100ml		<b>£4.20</b>
739004 250ml		<b>£7.95</b>
1767 Powdered gum arabic 500g		<b>£11.00</b>

Winsor & Newton Aquapasto watercolour media		
693660 60ml		<b>£6.99</b>

Lukas oxgall liquid		
712255 50ml		<b>£4.95</b>

Lukas masking fluid		
712239 50ml		<b>£4.95</b>



**Masque pen**  
The unique masking tool with pale blue masking fluid and built in nib.

760000 **£7.95**



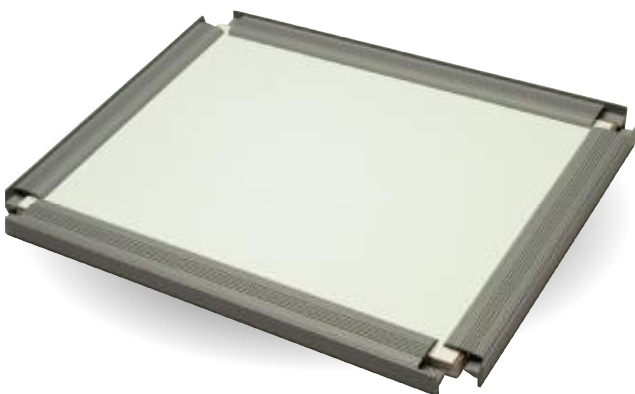
**Perspectoscope**  
0009 **£6.50**

**Paper Stretchers**

**Zipp Clamp Paper Stretcher**

The Zipp Clamp is an ingenious, light weight paper stretching system. It consists of a water resistant, acid free, feather weight Gator foam with 4 plastic edge clamps. The clamps cover a 1/2" border around the paper making only a slight impression; they do not mark, fold or stain the paper and enable the deckled edge to remain intact. Store the board without clamps to retain their tight fit.

841800 Zipp clamp 1/4 Imperial		<b>£25.00</b>
841802 Zipp clamp 1/2 Imperial		<b>£33.50</b>
841804 Zipp clamp Imperial		<b>£54.00</b>



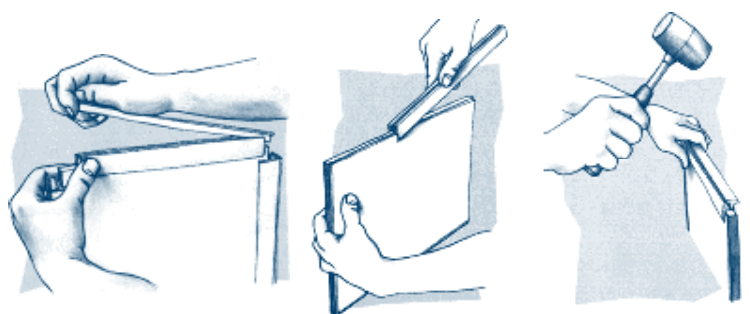
Paper can be stretched in 6 simple steps:

- 1 Remove clamps from board, removing the plug first.
- 2 Soak paper ready for stretching.
- 3 Allow excess water to drain then smooth paper onto board.

4 Starting at one end of a longest side, slide the clamp into position with the 'teeth' on the paper side.

5 'Lock' the clamp by pushing the plug into place. (You may need a rubber mallet for this). Work around the board with the 4 clamps, opposite sides together.

6 Once dry the paper is dry is ready to paint on, wait until finished painting is dry before removing the clamps.



**Keba Artmate**

The Keba artmate is a revolutionary paper stretcher with a patented tension control. It is a portable system ideal for stretching watercolour paper, keeping it extremely flat and preventing cockling, making wet in wet techniques and washes easier to apply. Paper can be stretched dry or wet allowing difficult papers such as cartridge to be used. It is also ideal for use with canvas, silk painting, and needlework.

Paper can be loaded and stretched on location by simply tightening the frame with the enclosed allen key. Frames can be taken apart and interchanged to make different sizes if you were to buy both frames.

841700 11 x 15"		<b>£69.95</b>
841720 15 x 22"		<b>£76.95</b>
841740 22 x 30"		<b>£92.95</b>

